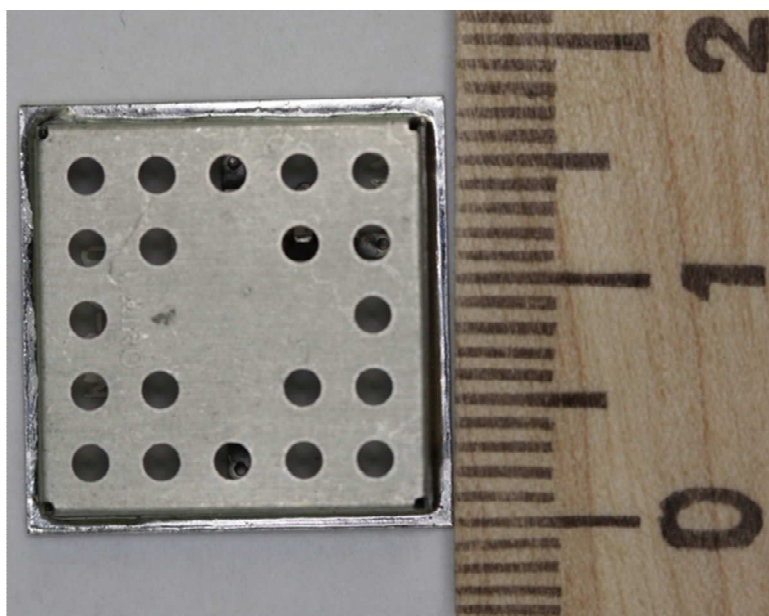


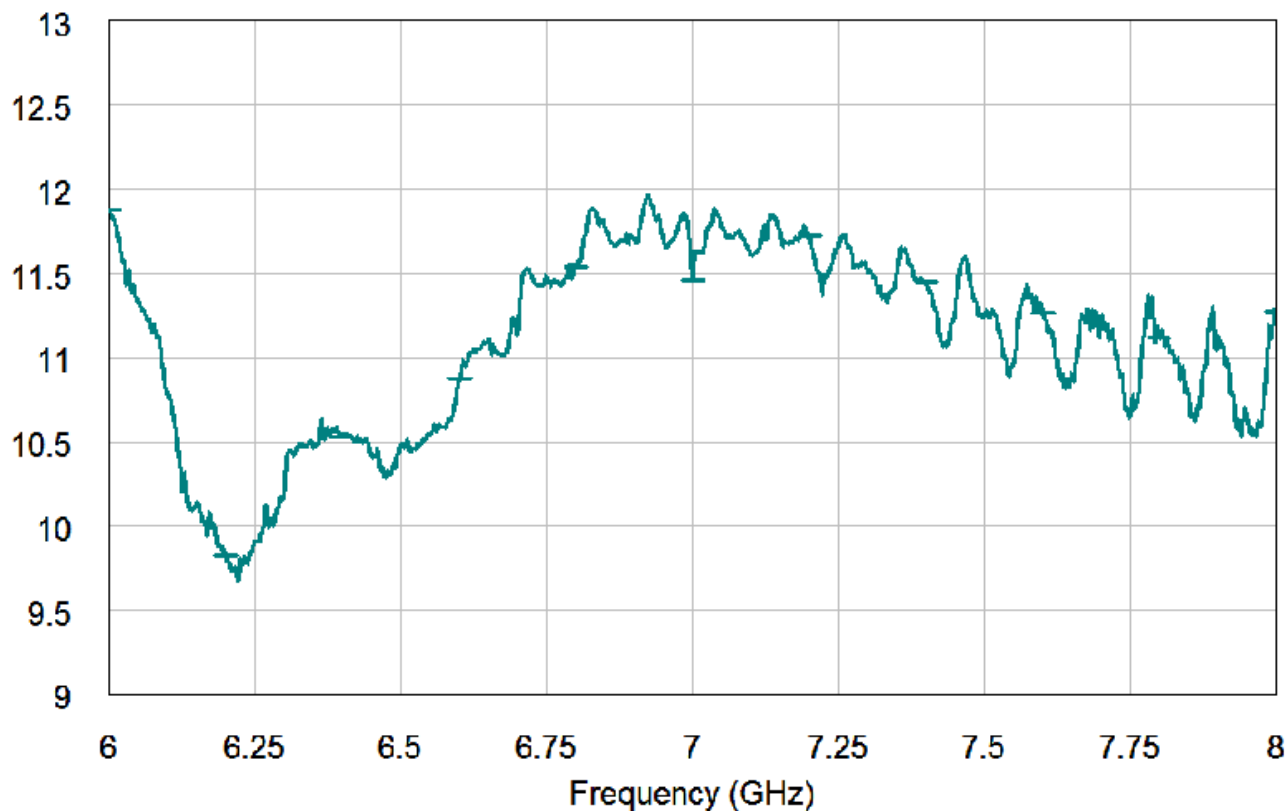
## Technical Data

Frequency range:	6 – 8 GHz
Transfer coefficient:	not less than 9,5 dB (at 6,2 GHz)
Compression level at 1 dB:	+10 dBm (at 8 GHz)
Input, output impedance:	50 Ohm
VSWR:	not more than 2,1:1
Power supply:	$3,5 \pm 0,4$ V
Current consumption:	$40 \pm 5$ mA
Installation method:	soldering (SMD-component), possible using SMA connectors



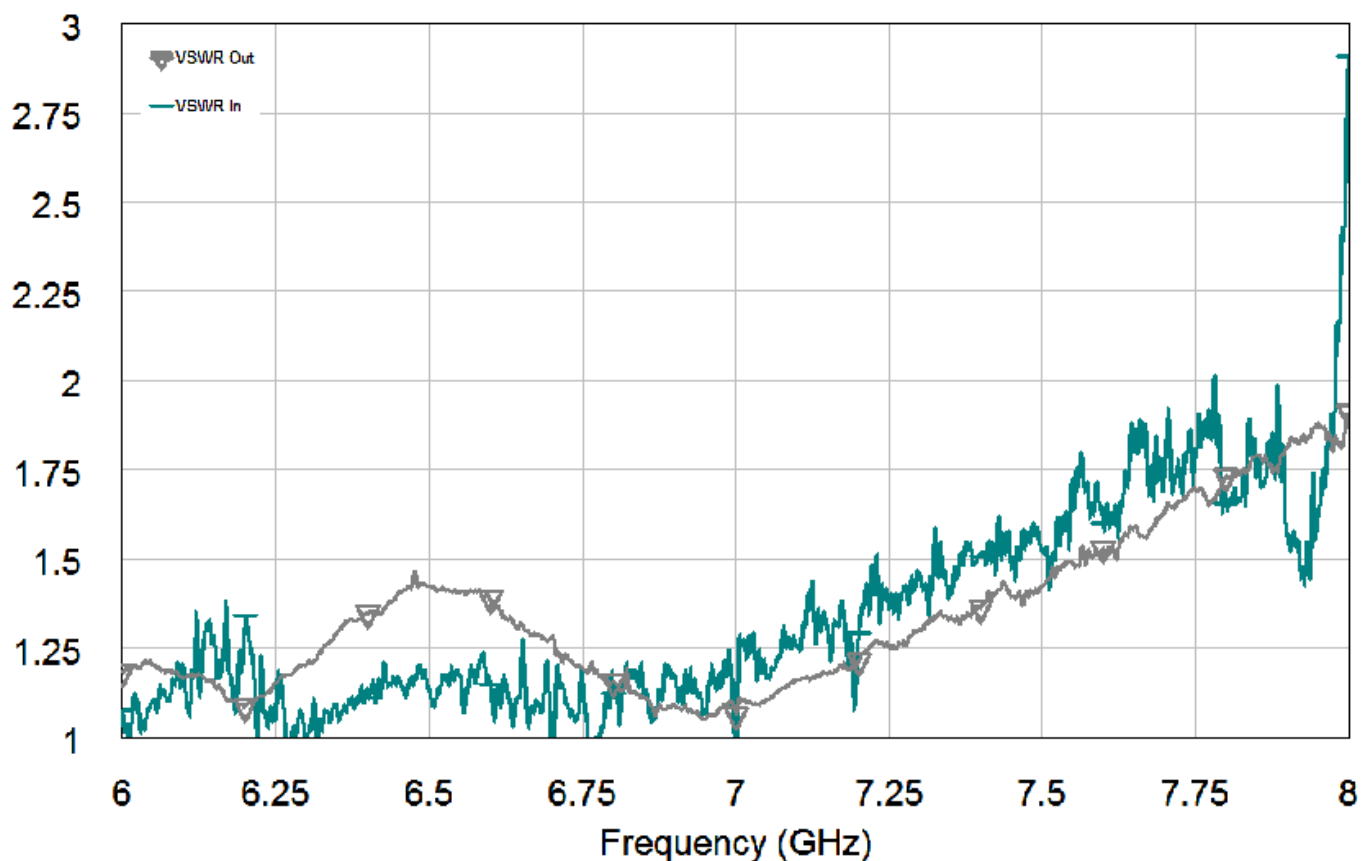
## Transfer coefficient

The following picture shows Transfer coefficient S21 in dB



## VSWR

The following picture shows VSWR the input (green line) and output (gray line).



## History

Author: Stepan Revutsky, «KBOR», Moscow

Date: December 4, 2012

Revision: 1.0

Changes: