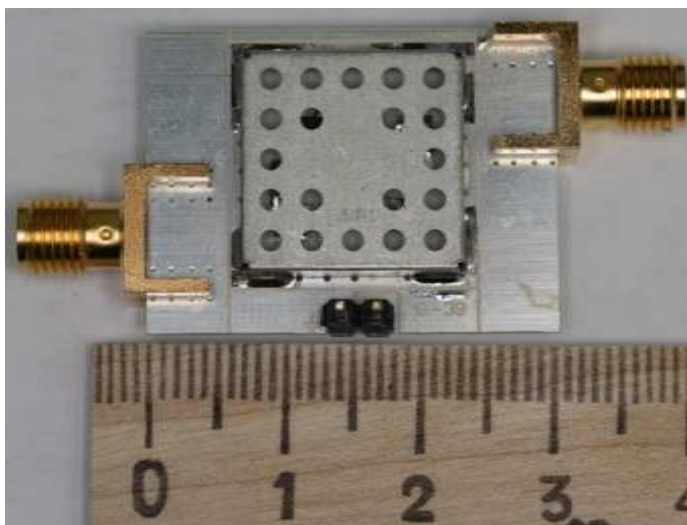
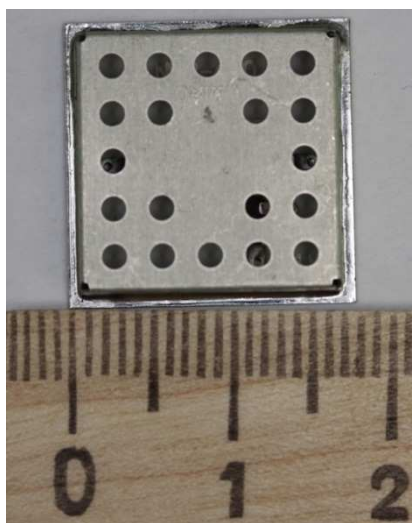


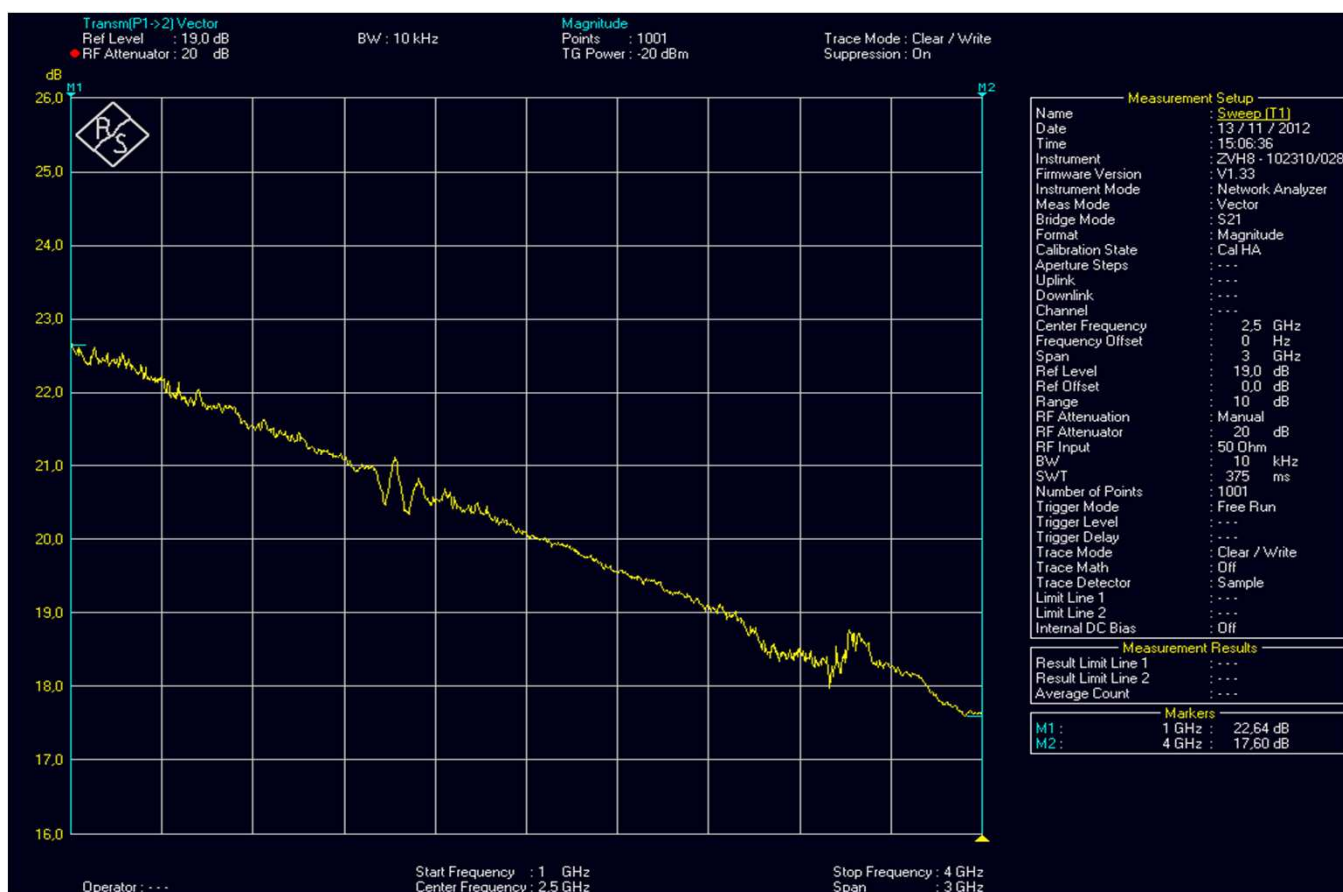
Technical Data

Frequency range:	1 – 4 GHz
Transfer coefficient:	not less than 17 dB (at 4 GHz) model 2: not less than 10 dB
Compression level at 1 dB:	+10 dBm@4 GHz
Input, output impedance:	50 Ohm
VSWR:	not more than 1,5:1 model 2: not more than 1,25:1
Power supply:	$3,5 \pm 0,4$ V
Current consumption:	60 ± 10 mA
Installation method:	soldering (SMD-component), possible using SMA connectors



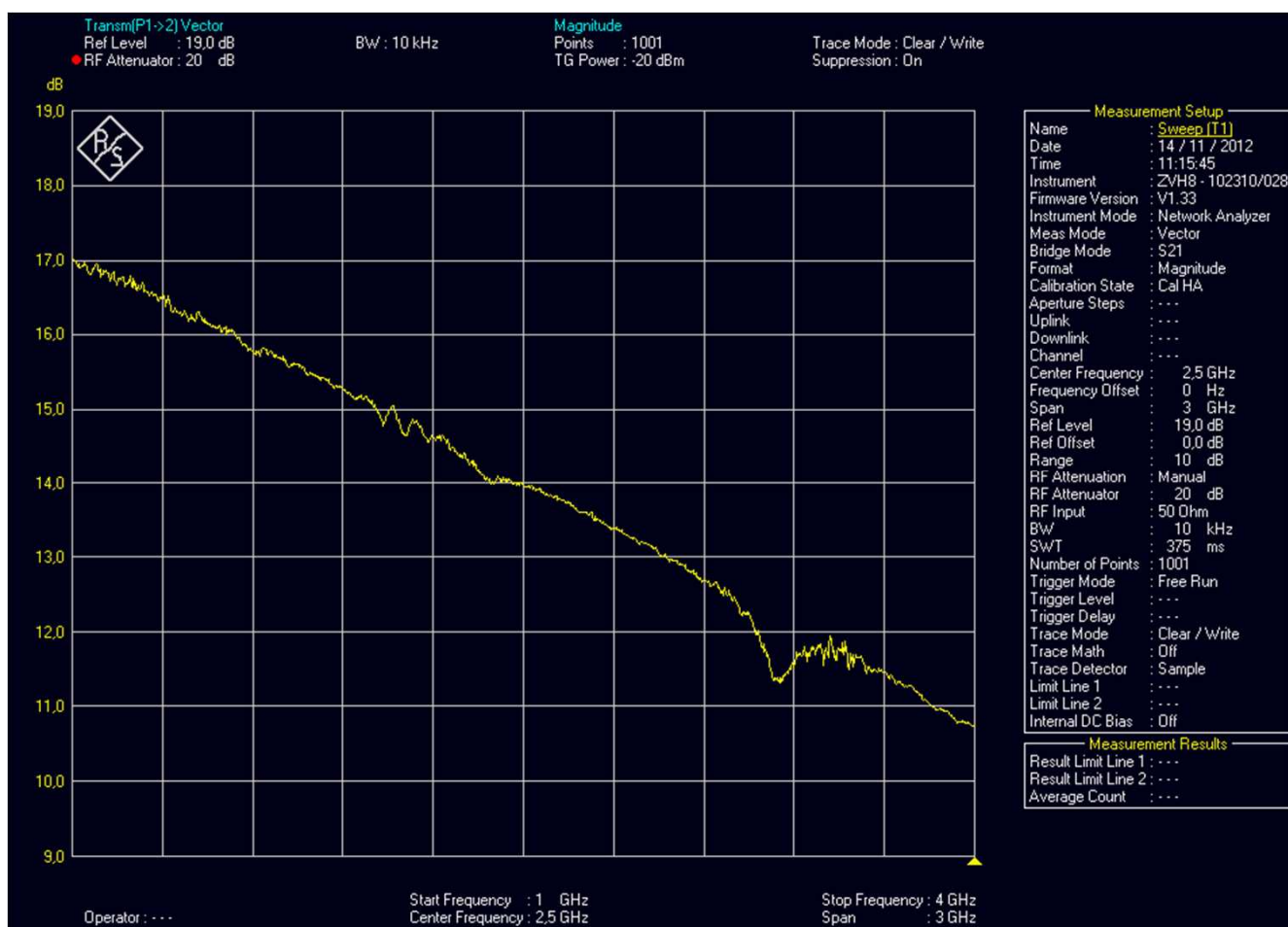
Transfer coefficient

The following picture shows Transfer coefficient S21 in dB



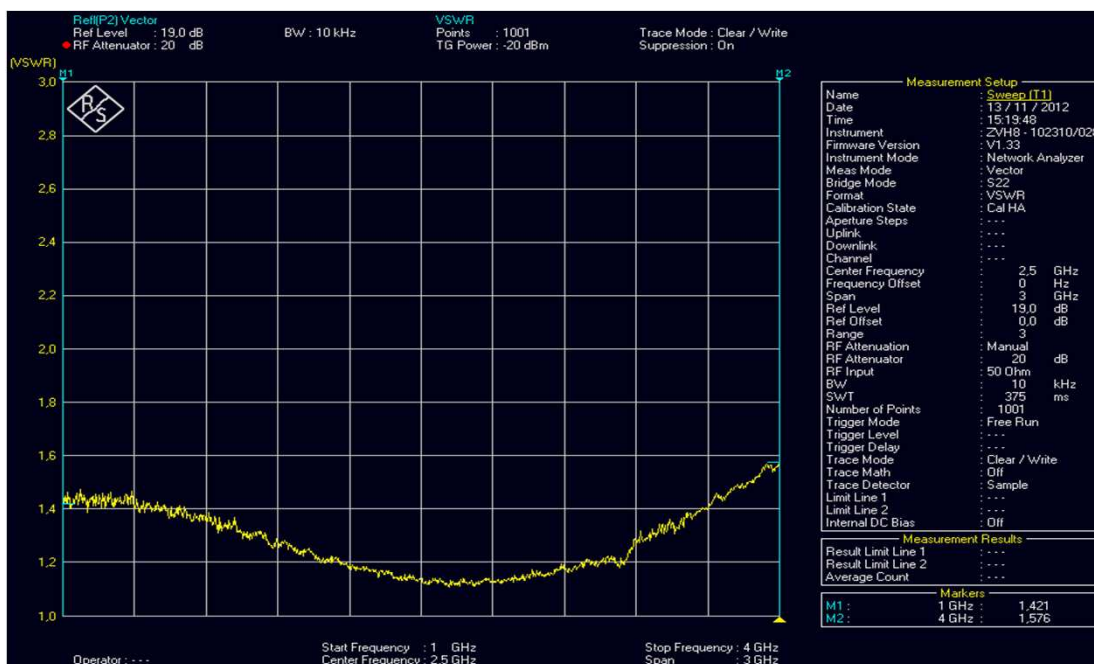
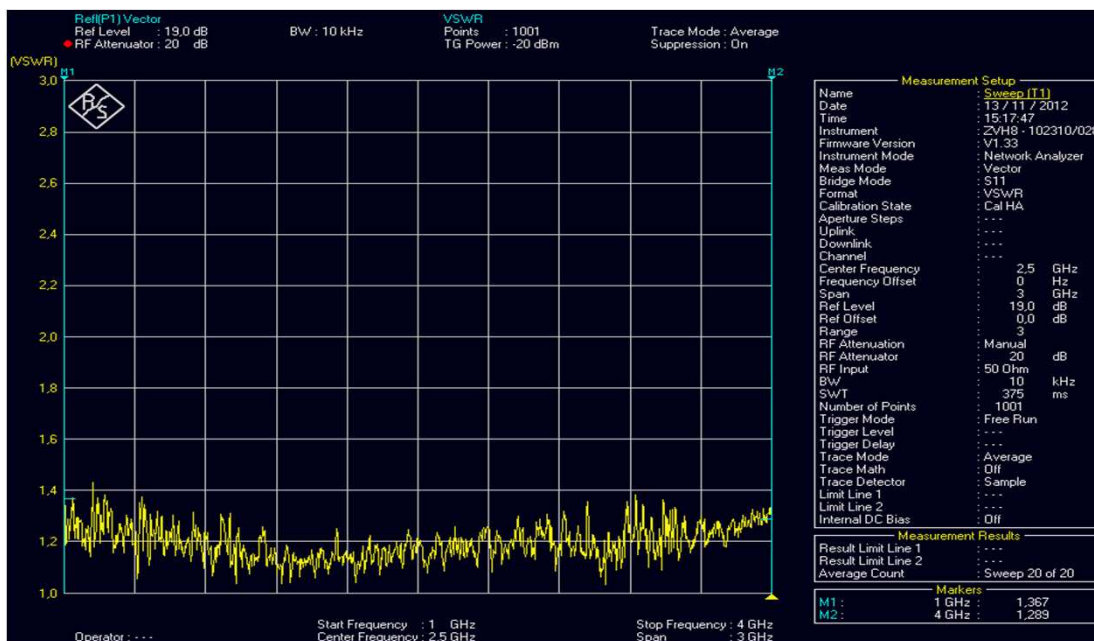
Transfer coefficient (model 2)

The following picture shows Transfer coefficient S21 in dB



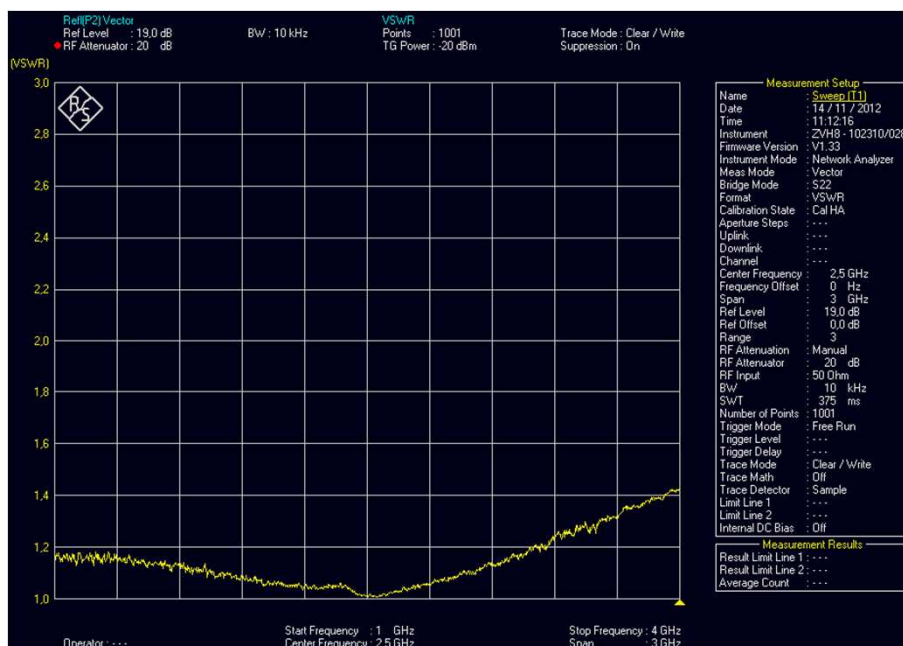
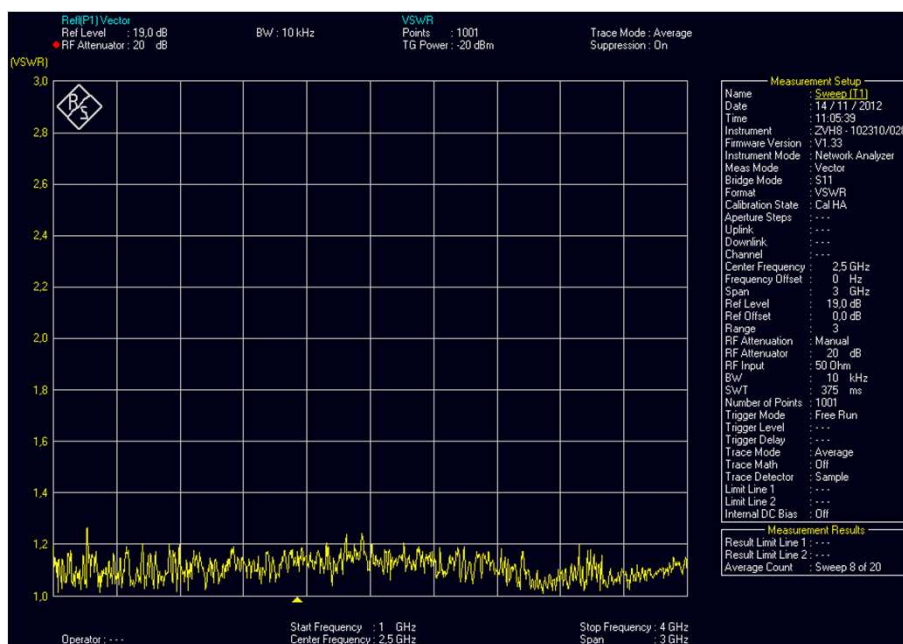
VSWR

The following picture shows VSWR the input and output accordingly



VSWR (model 2)

The following picture shows VSWR the input and output accordingly



History

Author: Stepan Revutsky, «KBOR», Moscow

Date: November 13, 2012

Revision: 1.0

Changes: